



**Noise Monitoring Result**

**Day Time (0700 - 1900hrs on normal weekdays)**

Location: M1a - Harbour Road Sports Centre

Date	Time	Weather	Measurement Noise Level			Baseline Level	Construction Noise Level	Limit Level
			Leq	L10	L90	Leq	Leq	Leq
Unit: dB(A), (30-min)								
27/9/2016	10:25	Fine	75.2	76.0	71.5	72	72	75
3/10/2016	10:15	Fine	74.6	76.0	72.0	72	71	75
11/10/2016	10:30	Fine	80.6	81.5	79.5	72	80	75
19/10/2016	13:30	Cloudy	81.3	82.0	80.0	72	81	75
24/10/2016	10:10	Fine	76.5	79.0	70.0	72	74	75

Location: M2b - Noon-day gun area

Date	Time	Weather	Measurement Noise Level			Baseline Level	Construction Noise Level	Limit Level
			Leq	L10	L90	Leq	Leq	Leq
Unit: dB(A), (30-min)								
27/9/2016	11:10	Fine	66.6	67.5	64.5	68	67	75
3/10/2016	11:00	Fine	67.3	68.5	65.5	68	67	75
12/10/2016	13:00	Fine	65.0	66.0	63.5	68	65	75
19/10/2016	10:15	Cloudy	70.2	71.5	67.5	68	67	75
24/10/2016	10:53	Fine	67.5	68.5	65.0	68	68	75

Location: M3a - Tung Lo Wan Fire Station

Date	Time	Weather	Measurement Noise Level			Baseline Level	Construction Noise Level	Limit Level
			Leq	L10	L90	Leq	Leq	Leq
Unit: dB(A), (30-min)								
27/9/2016	13:00	Fine	66.5	67.5	65.5	69	67	75
4/10/2016	10:25	Fine	66.7	68.0	64.5	69	67	75
12/10/2016	13:45	Fine	66.5	67.0	65.5	69	67	75
19/10/2016	11:00	Cloudy	68.5	69.5	65.5	69	69	75
25/10/2016	09:20	Fine	64.0	65.0	62.5	69	64	75

Location: M4b - Victoria Centre

Date	Time	Weather	Measurement Noise Level			Baseline Noise Level	Construction Noise Level	Limit Level
			Leq	L10	L90	Leq	Leq	Leq
Unit: dB(A), (30min)								
27/9/2016	13:39	Fine	65.0	66.0	63.5	67	65	75
4/10/2016	11:07	Fine	65.4	67.0	63.5	67	65	75
12/10/2016	14:20	Fine	64.1	65.0	62.5	67	64	75
20/10/2016	08:00	Cloudy	66.0	67.0	65.5	67	66	75
25/10/2016	10:05	Fine	64.8	66.0	63.5	67	65	75

Location: M5b - City Garden

Date	Time	Weather	Measurement Noise Level			Baseline Level	Construction Noise Level	Limit Level
			Leq	L10	L90	Leq	Leq	Leq
Unit: dB(A), (30min)								
27/9/2016	14:19	Fine	69.4	69.5	68.5	68	64	75
4/10/2016	13:00	Fine	70.2	70.5	69.5	68	66	75
12/10/2016	15:00	Fine	70.0	71.0	68.0	68	66	75
20/10/2016	09:00	Cloudy	70.0	72.0	68.0	68	66	75
25/10/2016	10:45	Fine	71.5	72.5	70.0	68	69	75

Location: M6 - HK Baptist Church Henrietta Secondary School

Date	Time	Weather	Measurement Noise Level			Baseline Level	Construction Noise Level	Limit Level
			Leq	L10	L90	Leq	Leq	Leq
Unit: dB(A), (30-min)								
27/9/2016	15:00	Fine	70.1	71.0	68.0	71	70	70
4/10/2016	13:40	Fine	70.3	71.0	68.5	71	70	70
12/10/2016	15:37	Fine	68.7	71.0	65.5	71	69	70
20/10/2016	09:40	Cloudy	67.0	68.0	66.5	71	67	70
25/10/2016	11:20	Fine	67.6	68.5	66.0	71	68	70



**Noise Monitoring Result**

**Day Time (0700 - 1900hrs on normal weekdays)**

Location: M7e - International Finance Centre (Eastern End of Podium) (Reference Station)

Date	Time	Weather	Measurement Noise Level			Baseline Level	Construction Noise Level	Limit Level
			Leq	L10	L90	Leq	Leq	Leq
Unit: dB(A), (30-min)								
27/9/2016	08:00	Fine	65.0	66.0	63.5	67	65	N/A
4/10/2016	08:15	Fine	66.2	67.0	64.5	67	66	N/A
14/10/2016	08:00	Fine	66.5	67.5	64.0	67	67	N/A
17/10/2016	08:30	Cloudy	64.5	65.5	63.0	67	65	N/A
24/10/2016	08:00	Fine	66.0	67.5	62.5	67	66	N/A

Location: M7w - International Finance Centre (Western End of Podium)

Date	Time	Weather	Measurement Noise Level			Baseline Level	Construction Noise Level	Limit Level
			Leq	L10	L90	Leq	Leq	Leq
Unit: dB(A), (30-min)								
27/9/2016	08:35	Fine	63.0	65.0	62.0	69	63	75
4/10/2016	08:50	Fine	65.0	66.0	63.5	69	65	75
14/10/2016	08:35	Fine	63.0	64.0	61.5	69	63	75
17/10/2016	09:35	Cloudy	63.5	64.0	61.0	69	64	75
24/10/2016	08:40	Fine	64.0	65.0	62.0	69	64	75

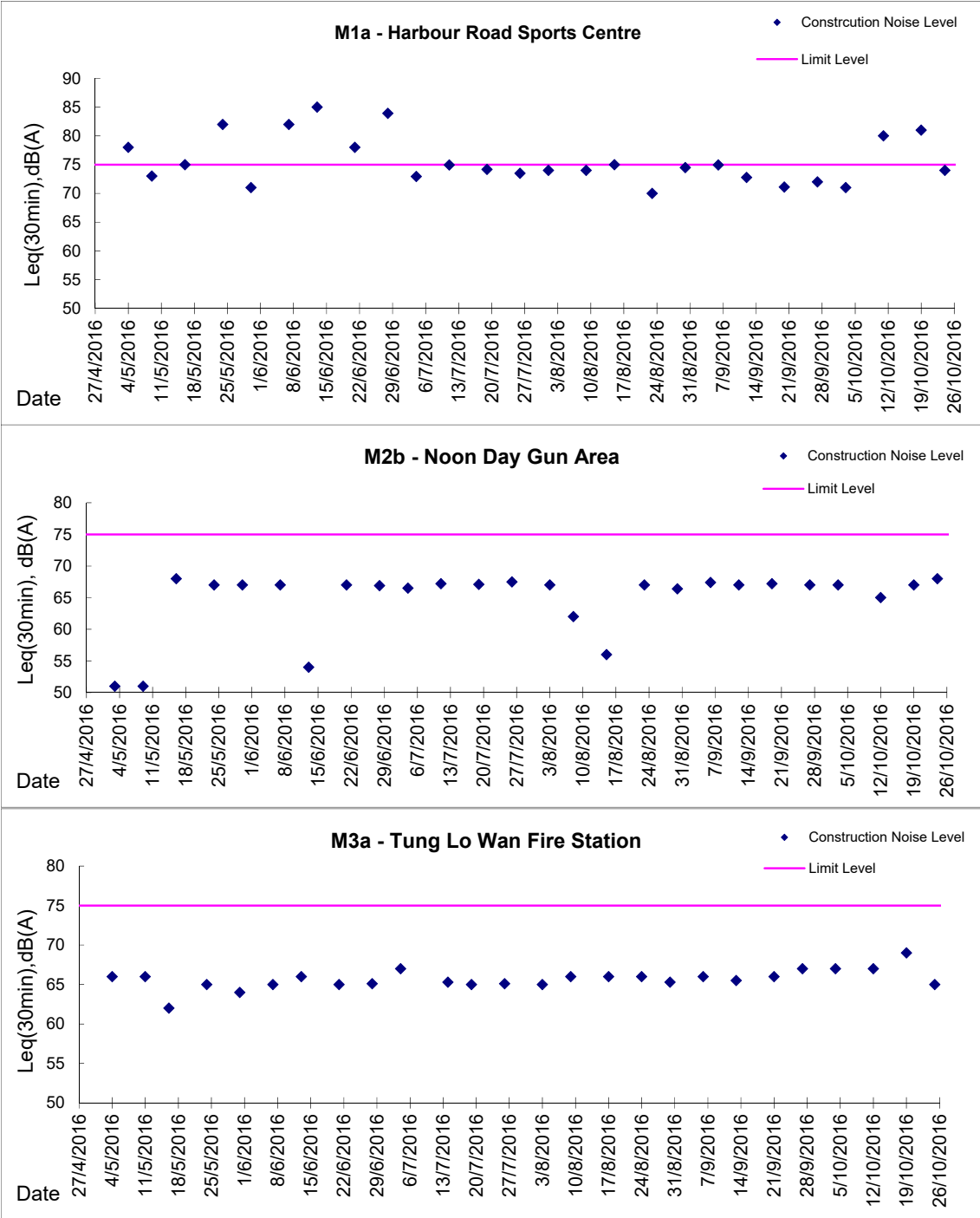
Location: M8 - City Hall

Date	Time	Weather	Measurement Noise Level			Baseline Level	Construction Noise Level	Limit Level
			Leq	L10	L90	Leq	Leq	Leq
Unit: dB(A), (30-min)								
27/9/2016	09:15	Fine	62.0	63.0	60.0	64	62	70
4/10/2016	09:35	Fine	66.0	67.5	63.0	64	62	70
14/10/2016	09:20	Fine	63.0	64.0	62.0	64	63	70
17/10/2016	11:00	Cloudy	62.0	63.0	59.0	64	62	70
24/10/2016	09:20	Fine	60.4	62.5	56.5	64	60	70



**Graphic Presentation of Noise Monitoring Result**

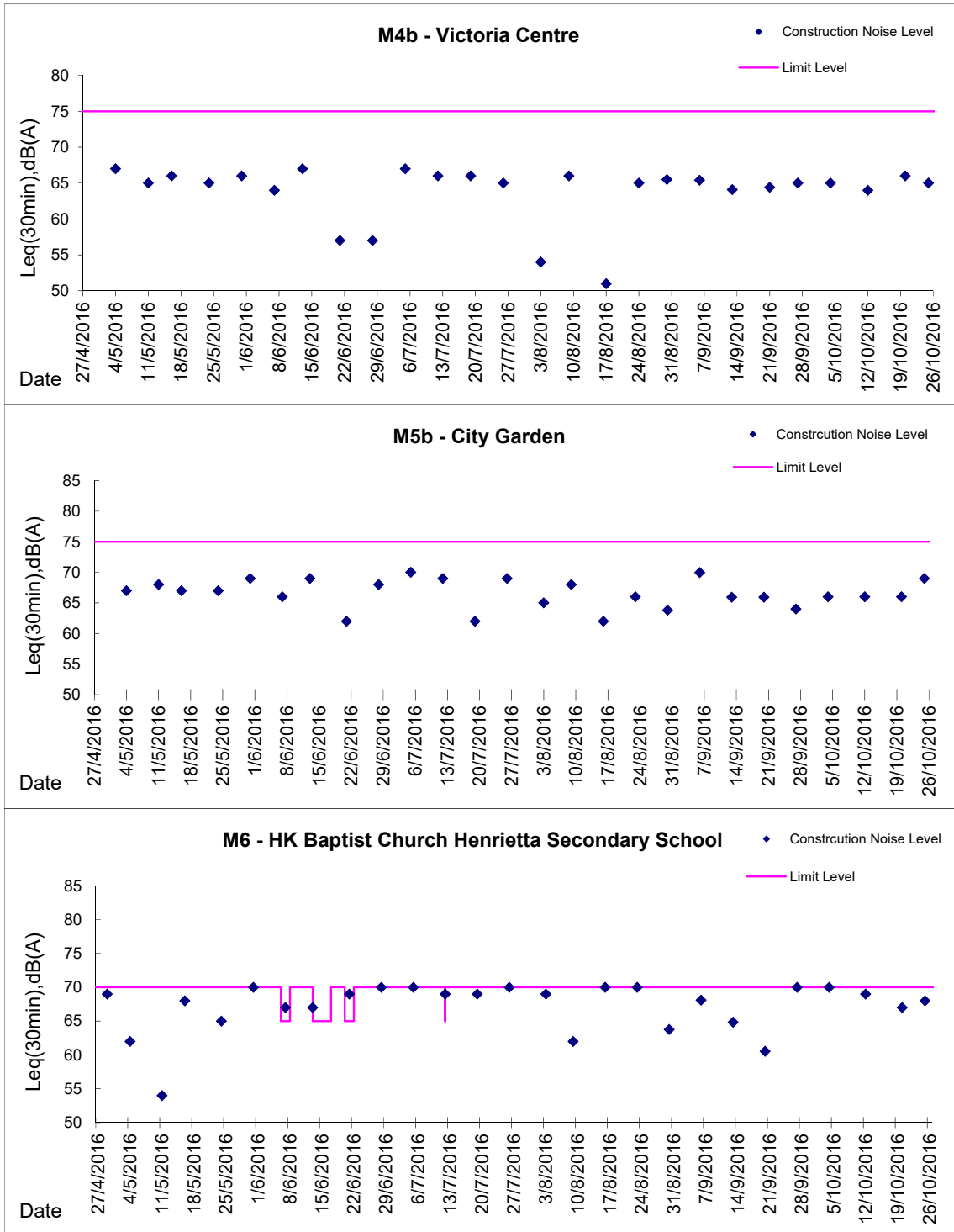
**Day Time (0700 - 1900hrs on normal weekdays)**





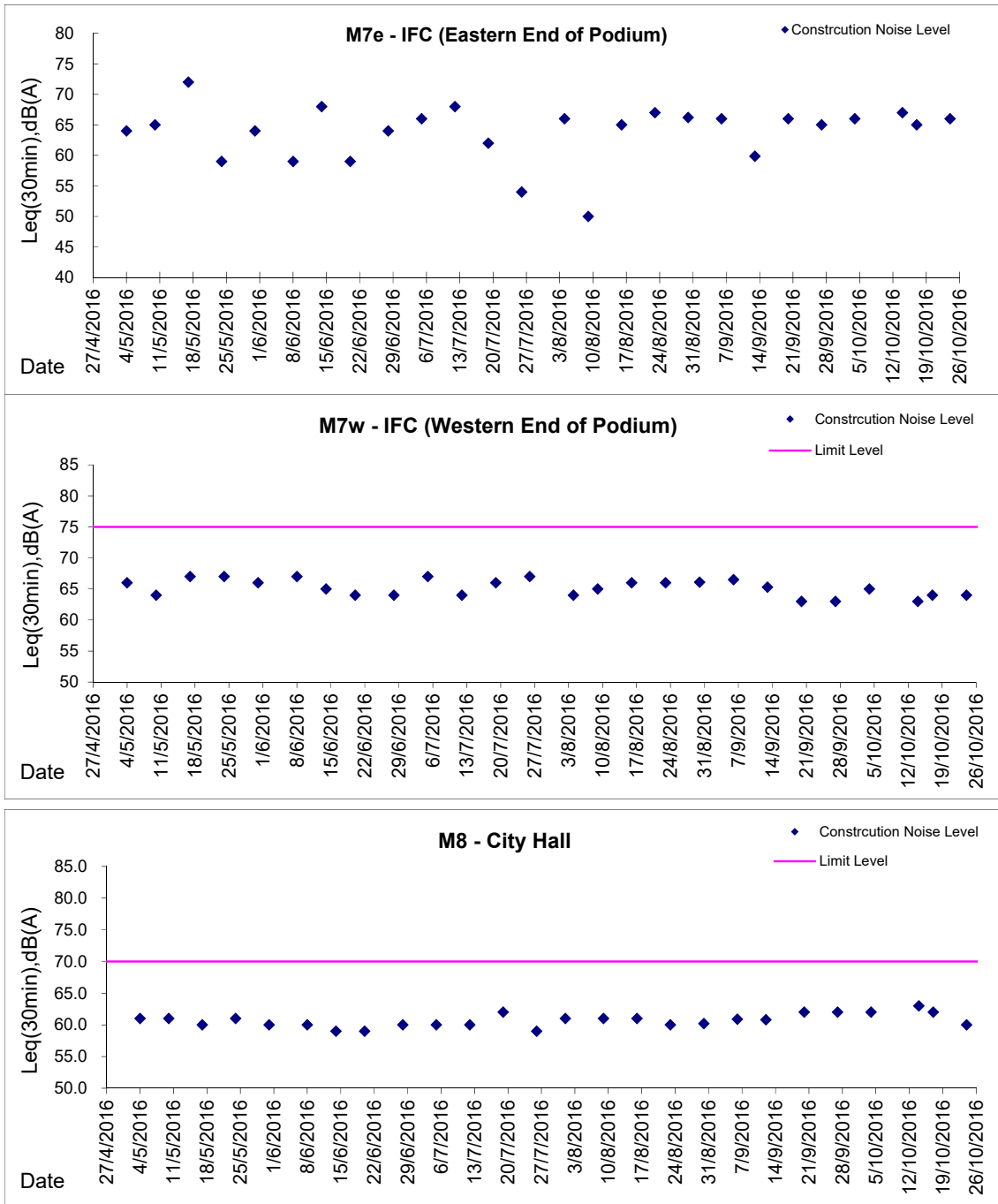
**Graphic Presentation of Noise Monitoring Result**

**Day Time (0700 - 1900hrs on normal weekdays)**



**Graphic Presentation of Noise Monitoring Result**

**Day Time (0700 - 1900hrs on normal weekdays)**



\* Remark: M7e - IFC (Eastern End of Podium) is a reference monitoring station